

B-Meters WDE-K50

Part Code	Name	Size	Qp (m3/h)	Output
BM050BC	DN50 WDE-K50 Flanged Cold Water Meter Pulse	50	40	PULSE
BM051BC	DN50 WDE-K50 Flanged Cold Water Meter MBus	50	40	MBUS
BM050BH	DN50 WDE-K50 Flanged Hot Water Meter Pulse	50	40	PULSE
BM051BH	DN50 WDE-K50 Flanged Hot Water Meter MBus	50	40	MBUS
BM065BC	DN65 WDE-K50 Flange Cold Water Meter Pulse	65	63	PULSE
BM066BC	DN65 WDE-K50 Flange Cold Water Meter MBus	65	63	MBUS
BM065BH	DN65 WDE-K50 Flange Hot Water Meter Pulse	65	63	PULSE
BM066BH	DN65 WDE-K50 Flange Hot Water Meter MBus	65	63	MBUS
BM080BC	DN80 WDE-K50 Flange Cold Water Meter Pulse	80	100	PULSE
BM081BC	DN80 WDE-K50 Flange Cold Water Meter MBus	80	100	MBUS
BM080BH	DN80 WDE-K50 Flange Hot Water Meter Pulse	80	100	PULSE
BM081BH	DN80 WDE-K50 Flange Hot Water Meter MBus	80	100	MBUS
BM100BC	DN100 WDE-K50 Flange Cold Water Meter Pulse	100	160	PULSE
BM101BC	DN100 WDE-K50 Flange Cold Water Meter MBus	100	160	MBUS
BM100BH	DN100 WDE-K50 Flange Hot Water Meter Pulse	100	160	PULSE
BM101BH	DN100 WDE-K50 Flange Hot Water Meter MBus	100	160	MBUS
BM125BC	DN125 WDE-K50 Flange Cold Water Meter Pulse	125	160	PULSE
BM126BC	DN125 WDE-K50 Flange Cold Water Meter MBus	125	160	MBUS
BM125BH	DN125 WDE-K50 Flange Hot Water Meter Pulse	125	160	PULSE
BM126BH	DN125 WDE-K50 Flange Hot Water Meter MBus	125	160	MBUS
BM150BC	DN150 WDE-K50 Flange Cold Water Meter Pulse	150	250	PULSE
BM151BC	DN150 WDE-K50 Flange Cold Water Meter MBus	150	250	MBUS
BM150BH	DN150 WDE-K50 Flange Hot Water Meter Pulse	150	250	PULSE
BM151BH	DN150 WDE-K50 Flange Hot Water Meter MBus	150	250	MBUS
BM200BC	DN200 WDE-K50 Flange Cold Water Meter Pulse	200	400	PULSE
BM201BC	DN200 WDE-K50 Flange Cold Water Meter MBus	200	400	MBUS
BM200BH	DN200 WDE-K50 Flange Hot Water Meter Pulse	200	400	PULSE
BM201BH	DN200 WDE-K50 Flange Hot Water Meter MBus	200	400	MBUS

Horizontal Woltmann meter with removable insert. Sealed counter mechanism with magnetic transmission. Inductive pre-equipment for the installation of data communicating modules wireless OMS M-Bus and non-magnetic pulse output.

Technical Data									
Size	DN	mm	50	65	80	100	125	150	200
-	Overload flow rate Q4	m ³ /h	50	78,75	125	200	200	312,5	500
-	Permanent flow rate Q3	m ³ /h	40	63	100	160	160	250	400
R=100H ↑	Transitional flow rate Q2	l/h	0,64	1,008	1,6	2,56	2,56	4	6,4
R=100H ↑	Minimum flow rate Q1	l/h	0,40	0,63	1,00	1,60	1,60	2,5	4,0
R=250H ↑	Transitional flow rate Q2	l/h	0,256	0,403	0,64	1,024	1,024	1,6	2,56
R=250H ↑	Minimum flow rate Q1	l/h	0,16	0,252	0,4	0,64	0,64	1	1,6
-	Min reading	l	0,5	0,5	0,5	0,5	0,5	5	5
-	Max reading	m ³	9.999.999						
-	Max pressure loss at Q3	bar	0,25	0,4	0,25	0,40	0,40	0,16	0,40
-	Max admissible pressure MAP	bar	16						

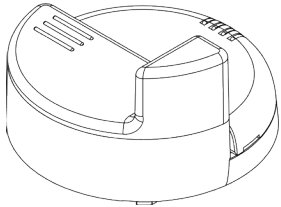


Features:

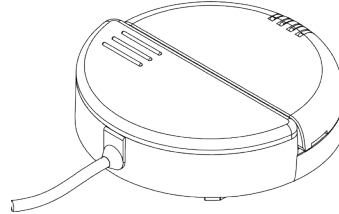
- R100-H ↑ VH →
- Available for cold water 0,1°C-50°C and for hot water 30°C-90°C
- Magnetic transmission
- Direct reading on 7 numeric rolls
- With removable insert
- 360° rotating dry dial
- With lid



Compatible Modules



mod. IWM-TX4



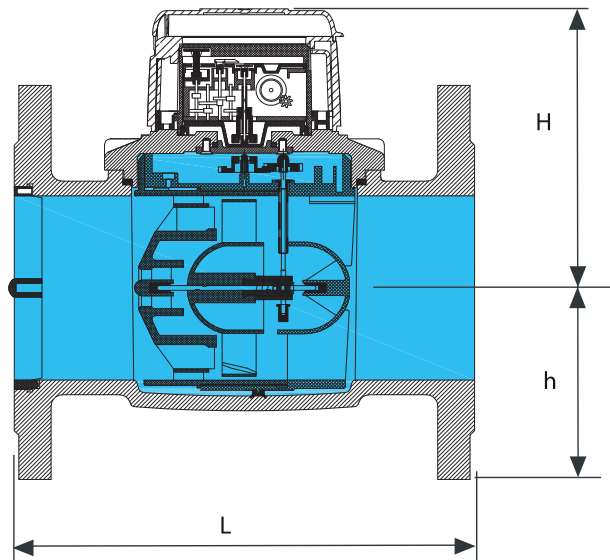
mod. IWM-MB4



mod. IWM-PL4

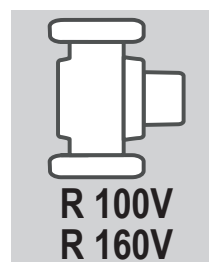
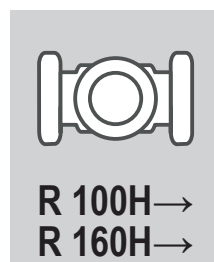
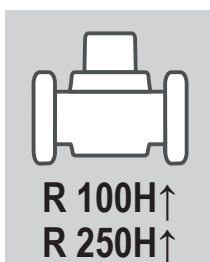


Dimensions and Weights



Size	mm	50	65	80	100	125	150	200
L	mm	200	200	225	250	250	300	350
H	mm	130	130	152	152	152	181	181
h	mm	78	86	95	104	117	133	162
Weight	kg	8,5	9,5	13,5	15	18	30,5	43

Installation Position



Managed Services

Meter Data Management

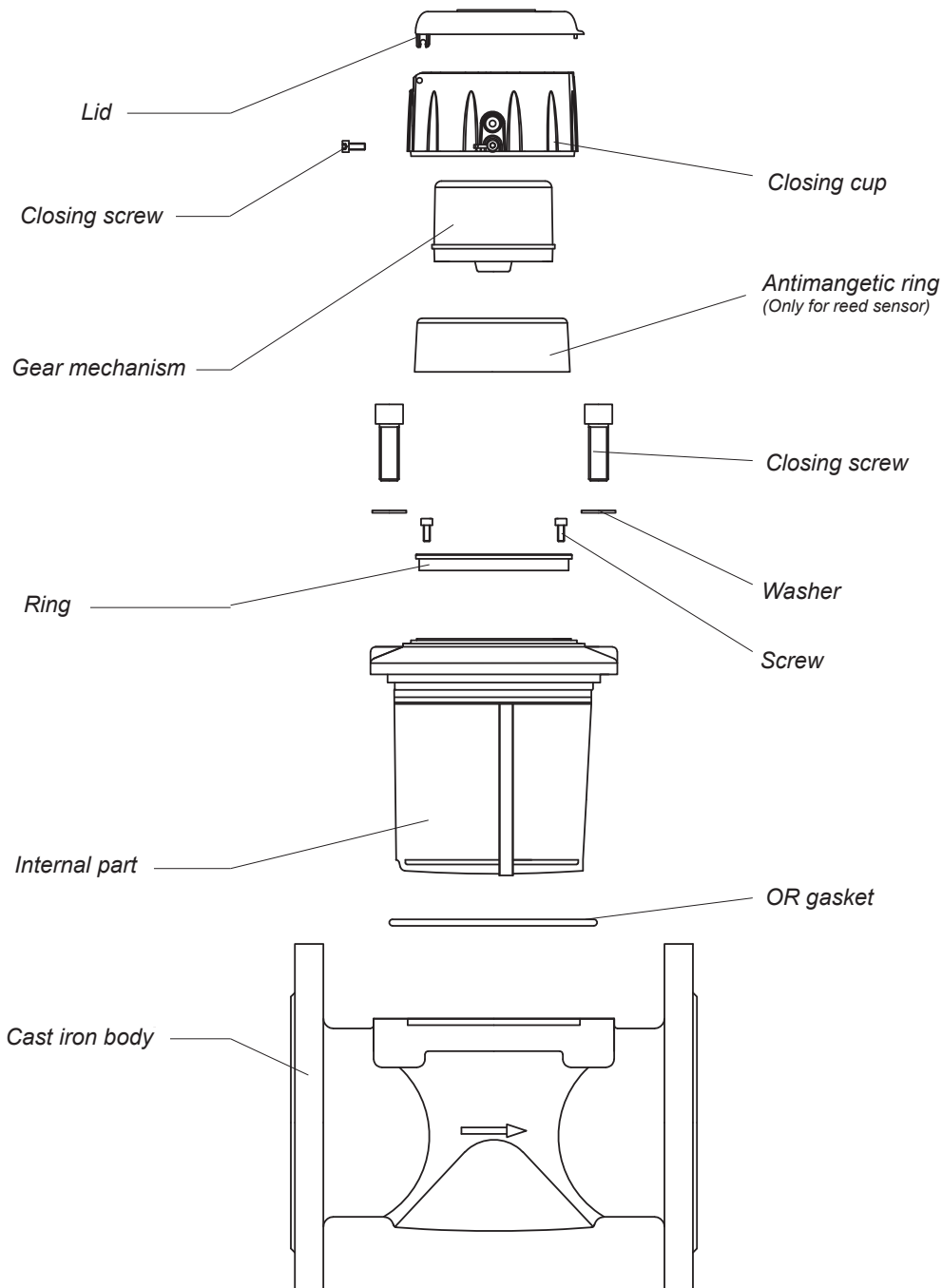
Billing Solutions

PAYG Management

Online Account Management

sycous.com

Parts



Data
Collection

Wired
Networks

Wireless
Networks

IoT
Technologies

Mbus & Pulse for
any network

sycous.com