

B-Meters GSD8-RFM

| Part Code | Name | Size | Qp (m ³ /h) | Output |
|-----------|--|------|------------------------|--------|
| BM215CW | 15MM Cold Water Meter MBus | 15 | 2.5 | - |
| BM215HW | 15MM Hot Water Meter MBus | 15 | 2.5 | - |
| BM220CW | 20MM Cold Water Meter MBus | 20 | 4 | - |
| BM220HW | 20MM Hot Water Meter MBus | 20 | 4 | - |
| BM001MB | B Meters Wired Mbus Communication Module | | | MBUS |

Single jet, dry dial, direct reading on 8 numerical rolls.

Produced in the versions for cold water and hot water in the diameters DN15 and DN20 mm (1/2" - 3/4").

360° rotating dial.

Optical pre-equipment for the installation of data communication modules M-BUS wired, wireless OMS and upon request LoRa & NB-IoT.



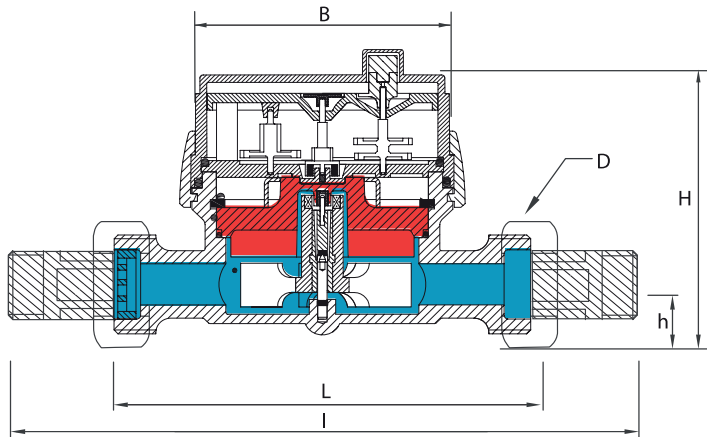
| Technical Data | | | | | |
|----------------|-----------------------------|-------------------|------|--------|----|
| Size | DN | mm | 15 | 15 | 20 |
| - | Overload flow rate Q4 | m ³ /h | 2 | 3,12 | 5 |
| - | Permanent flow rate Q3 | m ³ /h | 1,6 | 2,5 | 4 |
| R=100H ↑ | Transitional flow rate Q2 | l/h | 25,6 | 40 | 64 |
| R=100H ↑ | Minimum flow rate Q1 | l/h | 16 | 25 | 40 |
| R=160H ↑ | Transitional flow rate Q2 | l/h | 16 | 25 | 40 |
| R=160H ↑ | Minimum flow rate Q1 | l/h | 10 | 15,63 | 25 |
| - | Min reading | l | | 0.05 | |
| - | Max reading | m ³ | | 99,999 | |
| - | Max admissible pressure MAP | bar | | 16 | |



Features:

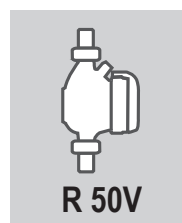
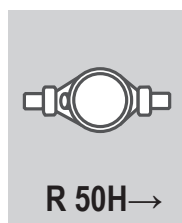
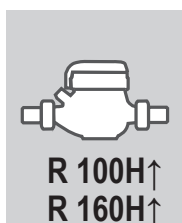
- R100-H↑ R50-VH→
- Available for cold water 0,1°C-50° C and for hot water 30°C-90°C
- Magnetic transmission
- Direct reading on 8 numeric rolls
- 360° rotating dry dial
- Anti-magnetic fraud protection
- Available with either MBus, Wireless MBus, LoRa or NB-IoT

Dimensions and Weights



| Size | mm | 15 | 15 | 15 | 20 |
|-------------------------|----|------|------|-------------|------|
| L | mm | 80 | 110 | 115 | 130 |
| I | mm | 160 | 190 | 195 | 228 |
| H | mm | 73 | 73 | 73 | 73 |
| h | mm | 18 | 18 | 18 | 18 |
| B | mm | 74 | 74 | 74 | 74 |
| D (Threading) | in | 3/4" | 3/4" | 7/8" - 3/4" | 1" |
| Weight (with unions) | kg | 1,18 | 1,40 | 2,09 | 2,18 |
| Weight (without unions) | kg | 1,18 | 1,40 | 2,09 | 2,18 |

Installation Position



Managed Services

Meter Data Management

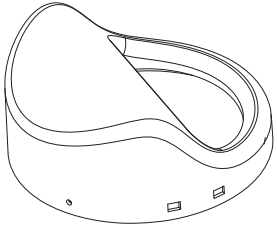
Billing Solutions

PAYG Management

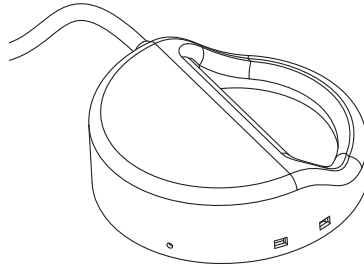
Online Account Management

sycous.com

Compatible Modules

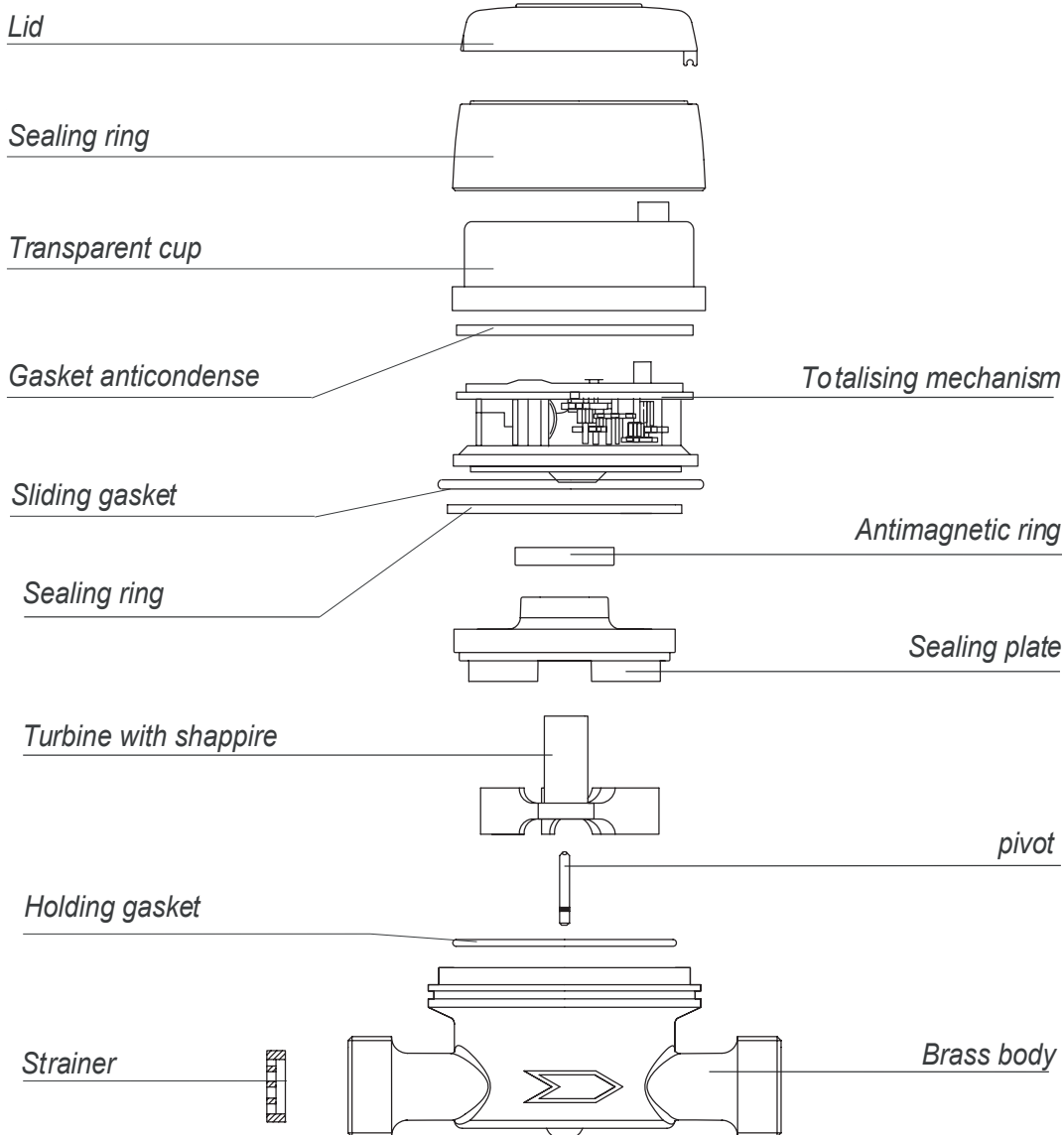


mod. IWM-TX1

mod. IWM-MB1


Parts



Data
Collection

Wired
Networks

Wireless
Networks

IoT
Technologies

M-Bus & Pulse for
any network

sycous.com